

Bio Restore Line

Hydro Reconstructor Line for preventive use or long-term restorative. Its formulation combines agents with high emollience and conditioning capacity to a complex of proteins. This union promotes the repair of superficial damage to the capillary cortex and restores the cuticular layer, intensifying conditioning, protection and shine.



FIT COSMETICS

bio
restore

SHAMPOO

REGENERAÇÃO E
BRILHO INTENSO
ÓLEO DE LINHAÇA, PANTENOL
E ÓLEO DE MONOI

*Regeneration and Intense Shine
Linseed Oil, Panthenol
and Monoi Oil*

pH 4,5 - 5,0

HOME CARE

e 300ml
Net 10.14 fl.oz. (US)

FIT COSMETICS

bio
restore

CONDICIONADOR

REGENERAÇÃO E
BRILHO INTENSO
ÓLEO DE LINHAÇA, PANTENOL
E ÓLEO DE MONOI

*Conditioner
Regeneration and Intense Shine
Linseed Oil, Panthenol
and Monoi Oil*

pH 3,8 - 4,5

HOME CARE

e 300ml
Net 10.14 fl.oz. (US)

FIT COSMETICS

bio
restore

LEAVE-IN

REGENERAÇÃO E BRILHO INTENSO
ÓLEO DE ARGAN E ÓLEO DE MONOI

*REGENERATION AND INTENSE SHINE
ARGAN OIL AND MONOI OIL*

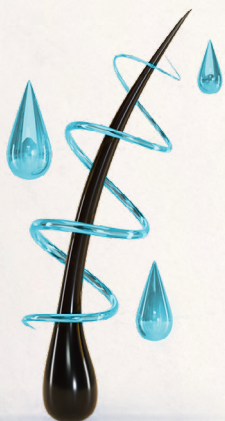
pH 3,8 - 4,5

HOME CARE

e 200ml
NET 6.76 FL.OZ. (US)

HAIR TYPE:

- Chemically treated
- Colored and with highlights
- Elastic hair and matted

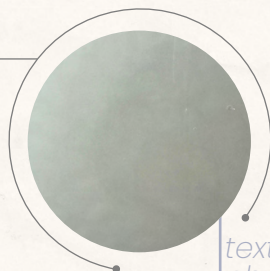


BENEFITS:

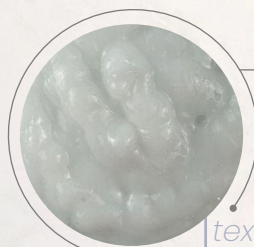
- Strengthens the cortex.
- Protects the color.
- Eliminates porosity.
- Conditions and protects cuticles.
- Recovers and intensifies shine.

SHAMPOO

Moisturizing and regenerative, it was developed for continuous and daily use. The combination of healing agents and water retainers with the purifying agent with balanced acidity, gently cleanses daily impurities.



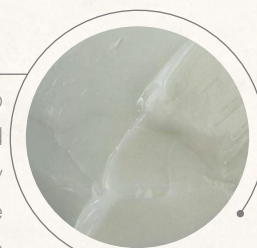
texture photo



texture photo

CONDITIONER

An indispensable item for the daily fight against dryness, the Conditioner intensifies cuticular sealing, protects against dehydration and inhibits the formation of excessive frizz and split ends.



texture photo

MASK

Mask with reconstructive and regenerative action that works to strengthen the fiber. The protein blend of wheat and keratin combined with nourishing agents with moisturizing and conditioning capacity repairs porosity and promotes the necessary balance to preserve the health of the strands. The stability provided develops naturalness and protection, keeping the strands beautiful, shiny and smooth in the medium and long term.



texture photo

LEAVE IN

Detangling cream without rinsing for brushing. Protects against dehydration of strands in thermal and solar processes.



FEATURED INGREDIENTS:

- Argan Oil
- Semi di Lino
- Coconut Oil
- Wheat Protein
- Keratin
- Cassava Extract
- Monoi Oil

RESULT:

- Medium Yield:

a) Professional Line: 40 a 50 applications.

b) Home Care Line: 10 to 15 applications.

- Daily protection and shine
- Eliminates porosity
- Prevents and fights elastic hair

STEP BY STEP:



1- Wash your hair 1x to 2x, as needed.



2- Remove excess water and apply the mask strand by strand. Massage the strands well and let it act for 10 minutes.



3- Rinse 100% under running water.



4- Apply the conditioner and massage well.



5- Rinse 100% under running water.



6- Remove excess water and apply a generous amount of Leave-In. Spread all over the length and ends of the hair.



7- Ends with a blow-dry or as you wish.

ADDITIONAL TIPS:

Avoid applying mask to the scalp.



Attention in the indication: The reconstruction is done by fortifying agents rich in proteins. Hair with a lot of natural resistance can feel stiff.



At home: Use the mask only 1x a week or as instructed by a professional. Hair needs a few washes to naturally stabilize deposited nutrients and vitamins.